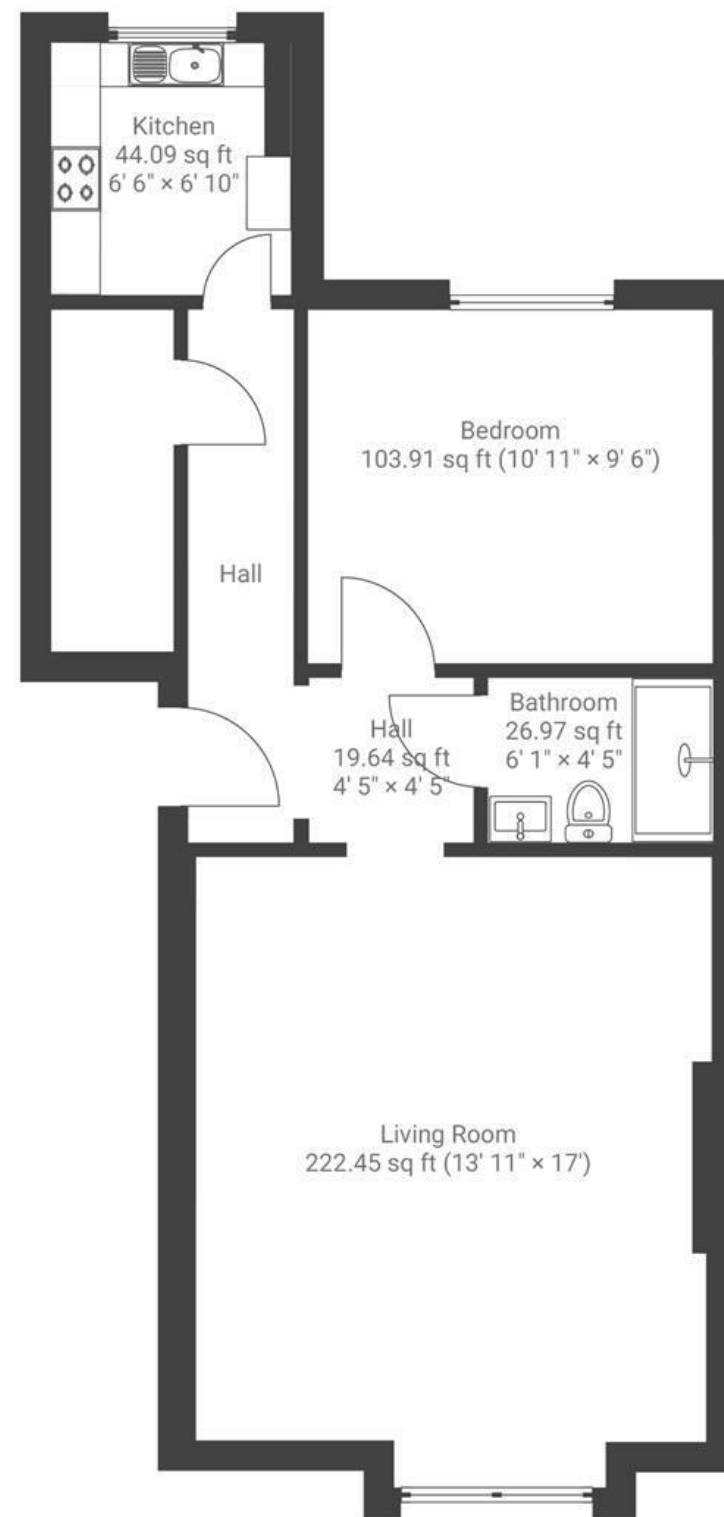


Meridian Place

CLIFTON

APPROXIMATE FLOOR AREA
45.3 SQM / 488 SQFT



Boardwalk

Meridian Place

, BRISTOL



£300,000



1 Bedrooms



BS8 1JG



1 Bathrooms

"We love the location, so close to the Triangle and Clifton Village, there is a super little green at the end of the road by The Quinton pub, perfect for sunny days and two minutes from the front door. The flat is going to be sorely missed, so many original features, especially great is the ease of the shutters and that it's in the ground floor but set back so you feel very much in your own space when the door is closed. There's a lovely outlook over a garden."

